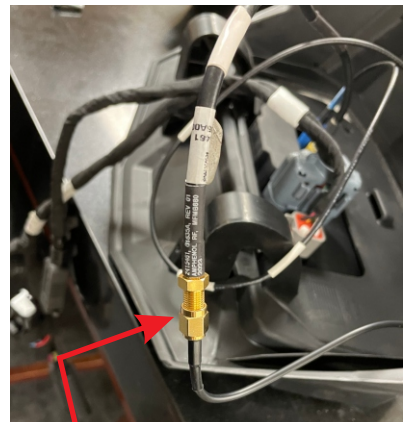
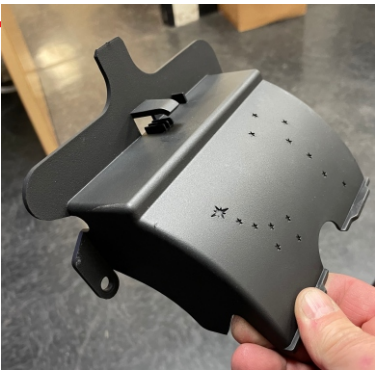


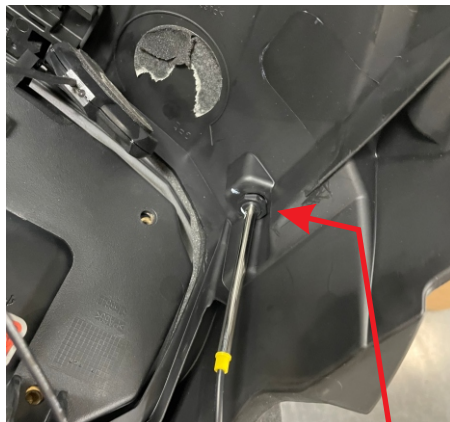
Skinz Polaris Matryx Helium Hood

Installation Instructions

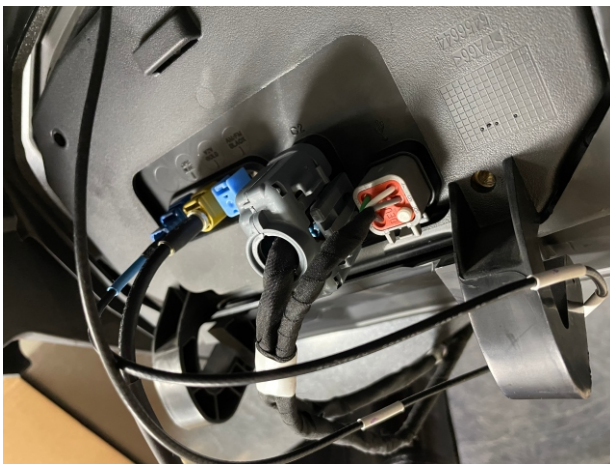
1. You will remove the 1/4 fasteners on your OEM hood and install on your new Helium hood. Be careful when removing the keeper washers as you will reuse them.
2. If you have the small gauge, you will remove it from your OEM hood and install it in the Helium hood. Cut the zip ties on the harness to remove from the OEM hood. It is a push out/push in style. It will install just like the OEM. When installing the face plate on the hood, carefully align the faceplate on the front of the hood, keeping it centered up & down and sideways. Drill a 3/16" hole and place a rivet in the hole to hold it. Check your alignment and drill a second hole and place a rivet in place. Pull these two rivets and then drill & install the rest of the rivets.
3. If you have the large gauge, you will need to remove it first from the hood. It may be easier to remove the upper pod from the hood but you can decide based on your skill level. Remove the 4 fasteners from the back of the gauge. This will allow you to remove the small cover with the radius that is covering the plugs. Then, unplug the wires from the back of the gauge. You will need to separate the gold connection for the GPS sensor. Remove the nut on the GPS sensor and remove from hood. You will need to cut the zip ties.



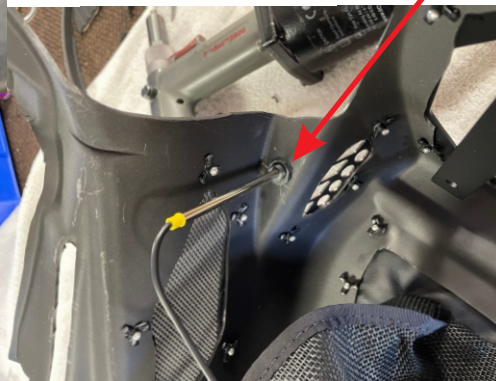
Separate this fitting to remove the sensor from the hood.



Remove the nut fastening the GPS sensor to the hood and remove.

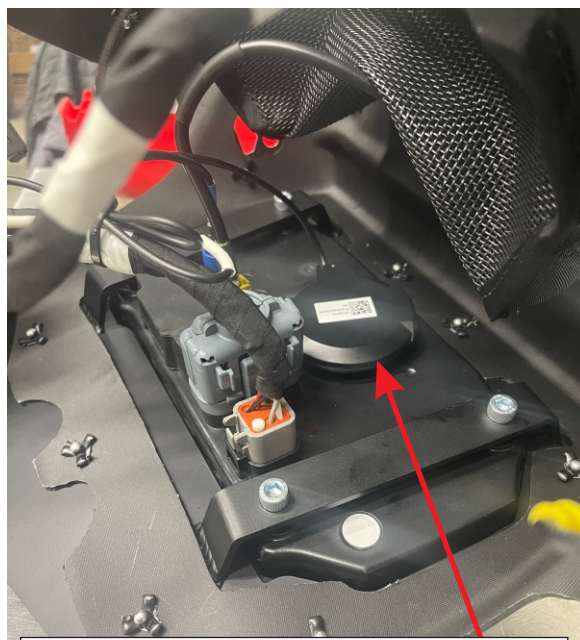
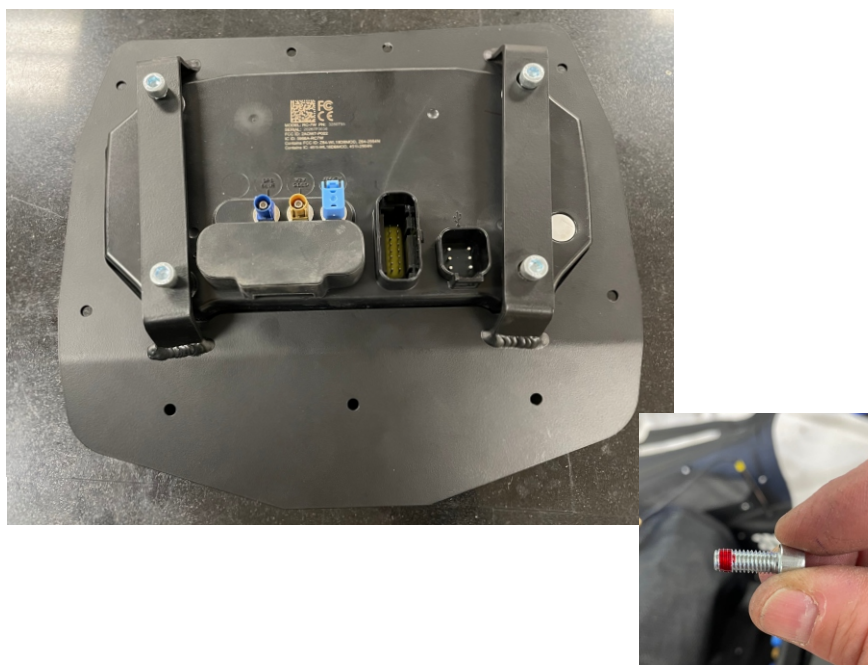


4. On the Helium hood, there is a ledge on the left side of the hood. Drill a 1/2" hole in the location you see in the picture below. This is where you can install the GPS sensor and tighten the nut securely.



5. Place the gauge in the large display as shown. Install the 4 - Socket Head screws in the gauge. Place a small amount of medium loctite on the threads. Tighten screws but don't over tighten. Place the faceplate with gauge on the hood and center the faceplate on the hood. Drill one 3/16 hole and place a rivet in the hole. check the position of the faceplate and drill another 3/16" hole and push a rivet in the hole. If all looks good, pull the 2 rivets and drill & install the rest of the rivets. Plug in the wiring harness and connect the gold fittings together.

6. Your kit includes adhesive backed velcro hook & loop. Use this to attach the receiver disc to the inside of the hood. You can stick it on the back of the gauge or the side of the hood. Use the zip ties in the kit to secure the wire harness and the connectors.



Place the receiver disc here or on the side of the hood. Note: You will have to pull it off of the OEM hood. It will easily separate with a small screw driver.

