

Skinz F35 Rear Bumper Kit

Instructions



Part # PRB440-F35-All Colors / PRB450-F35-All Colors

1. Remove the old bumper by removing the 5M torx screws from the inside of the tunnel. Remove reflectors on the sides of the bumper. Use a screw driver to carefully pop up the reflector. Remove any left over adhesive.
2. Next, drill out the large flanged rivets holding the plastic tail light/snow flap assembly. Be sure to use a vise grip on the backside of the rivet to prevent the rivet from spinning and melting the plastic. On the bottom of the tunnel, remove the 2 - T30 torx screws fastening the tail light/snow flap on the tapered panel. Unplug the tail light and remove along with the plastic.



Remove reflector



Remove 2 - T30 Screws



Drill out these 2 large flanged rivets and be sure to hold the back with a vise grip as shown.

3. Remove the rear tapered panel. For the large structural rivets, use a 7/16" drill bit and drill out the rivet from the side of the rivet with the larger flange. You will only drill off the flange of the rivet and you can punch out the rivets as shown. For the smaller rivets, you can use a 3/16" drill bit.

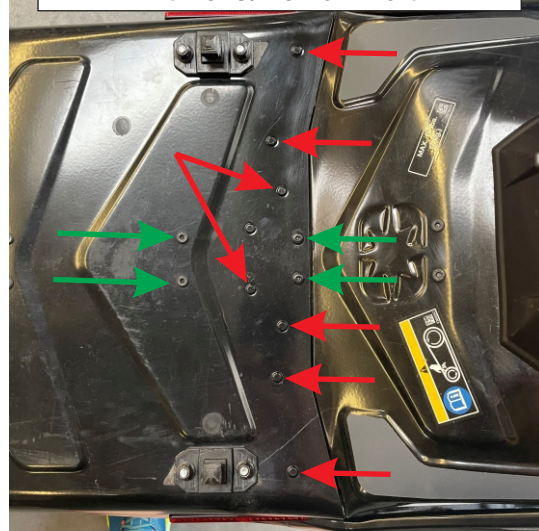


Drill out this rivet on each side of the tunnel using a 7/16" drill bit.

4. After you have all the rivets out, remove the panel. If your tunnel was bent, you may have to do a little straightening. If not, you are good to go. Use a tin snips to cut the panel to remove the tail light plug wire



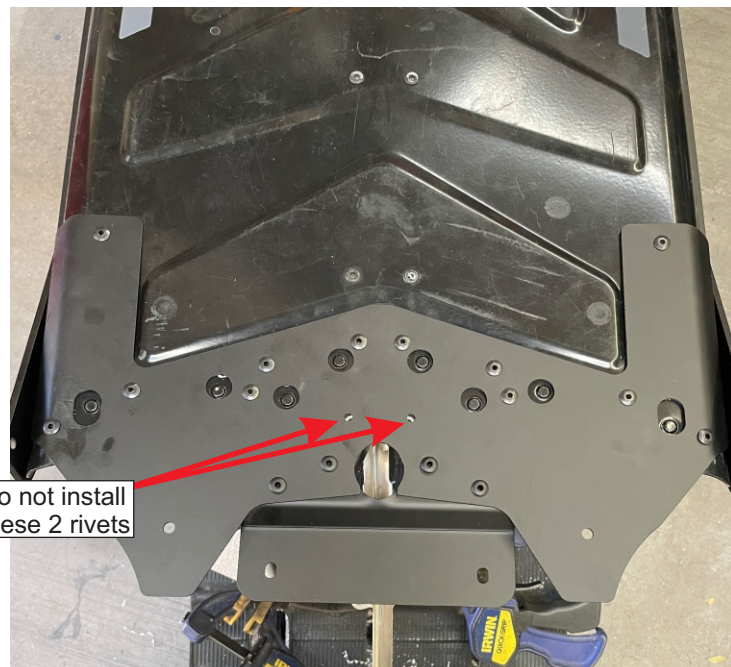
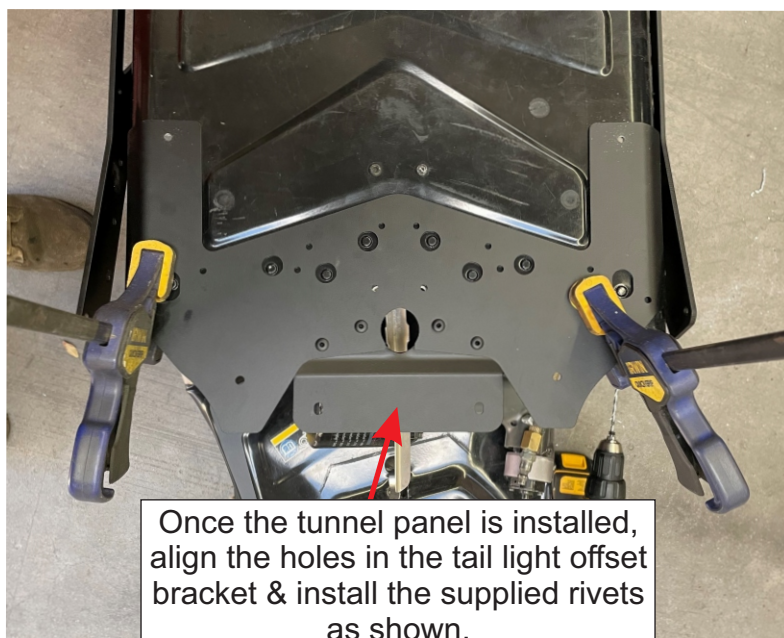
Drill out the rivets with the green arrows from the top with a 3/16" drill bit.



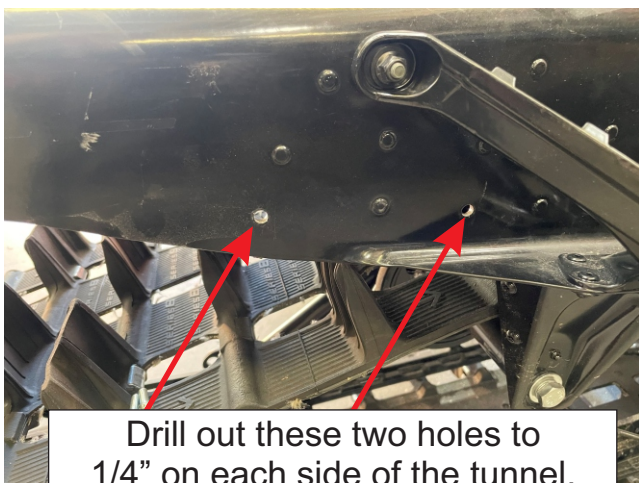
Drill out the rivets with the red arrows from the bottom using a 7/16" drill bit. Only drill off the flange of the rivet.

For Technical info:
Info@skinzprotectivegear.com

5. Place the new skinz tunnel panel on the tunnel. The panel will locate itself and align with the stamping on the OEM tunnel. Use clamps to secure the tunnel panel to the tunnel as shown. Make sure all is properly aligned and even before you start drilling. Once you are positioned, use the existing holes to drill 3/16" holes and install rivets as shown. Note: Do not install the 2 rivets designated at this time.



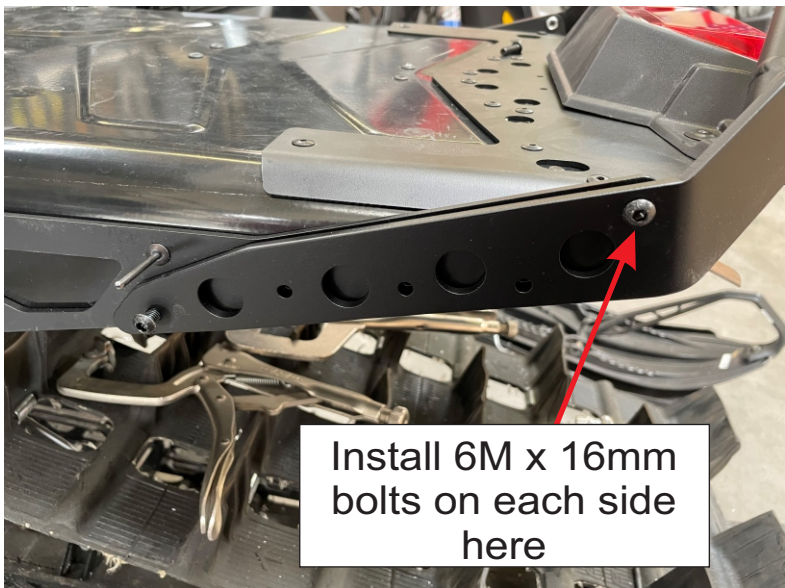
6. Next, drill out the holes in the sides of the tunnel to 1/4" as shown. Place the side plates on the sides of the tunnel to determine the cut line on the bottom of the side plate. Make sure both side plates are even and parallel to the top of the tunnel before marking your cut lines on the tunnel. If you don't have them aligned, the bumper will be crooked. Once you have the lines on the bottom of the side plates marked, remove side plates and cut the bottom of the tunnel. Deburr all edges. Re-install side plates.



Note: If you have these pak mounts, they can be re-installed after the installation is complete. Use the holes in the tunnel and drill from the bottom side. Re-install mounts with existing hardware.



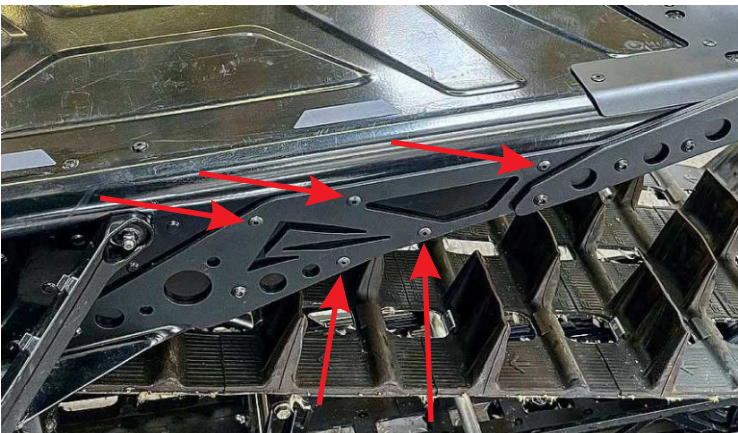
7. Place the rear grab on the bumper side plates. You will be able to install the 6M x 16mm bolt towards the back of the bumper as shown. Tighten the two bolts on the side plates on each side and then tighten the bolts on the bumper enough to hold it but will allow you to position the bottom edge of the rear grab with the bottom edge of the side plate. Once you have accomplished this, use the front hole in the rear grab to drill a 1/4" hole. Install 6M x 20mm bolt and nyloc nut on each side. Make sure all is aligned and tighten this hardware. Use the holes in the rear grab side plate and drill with 1/4" drill bit.



Install 6M x 16mm bolts on each side here



Drill 1/4" holes & install 6M x 20mm bolts here along with nyloc nuts.



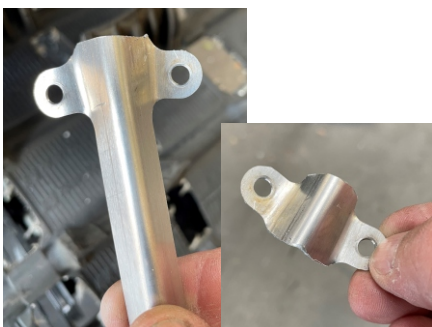
8. Use the smaller holes in the side plate as a guide & install the supplied rivets on each side. Note: the 155 & the 165 have different amount of rivets.



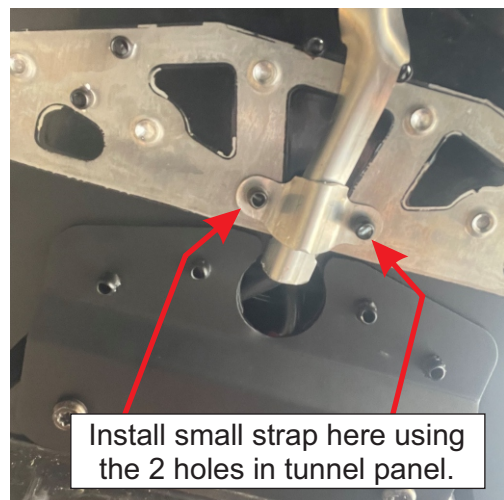
3/16 large flange rivet here with rivet backing washer on the bottom side

9. Re-install the tail light as it came off the OEM tunnel.(the excess wire will fit inside the tail light cover). The plug will fit through the hole in the new tunnel panel and tail light bracket. Use the T30 bolts you removed to install the tail light bracket. Included in your hardware kit is 2 - large flanged black rivets and 2 rivet backing washers. Be sure to install the rivet backing washers on the large flanged rivets.

10. You will need to shorten the aluminum tail light wire cover. Cut the cover off as shown in the picture. Cut off the small section with the 2 rivet holes. This will be used as a fastener strap. Install this small strap using the 2 rivet holes in the tunnel panel you didn't use yet.



Cut off aluminum protector as shown. Don't cut wire.



Install small strap here using the 2 holes in tunnel panel.